



DRILLING LOG



FROM : (m) 660 TO : (m) 3160 SCALE : 1/ 1000

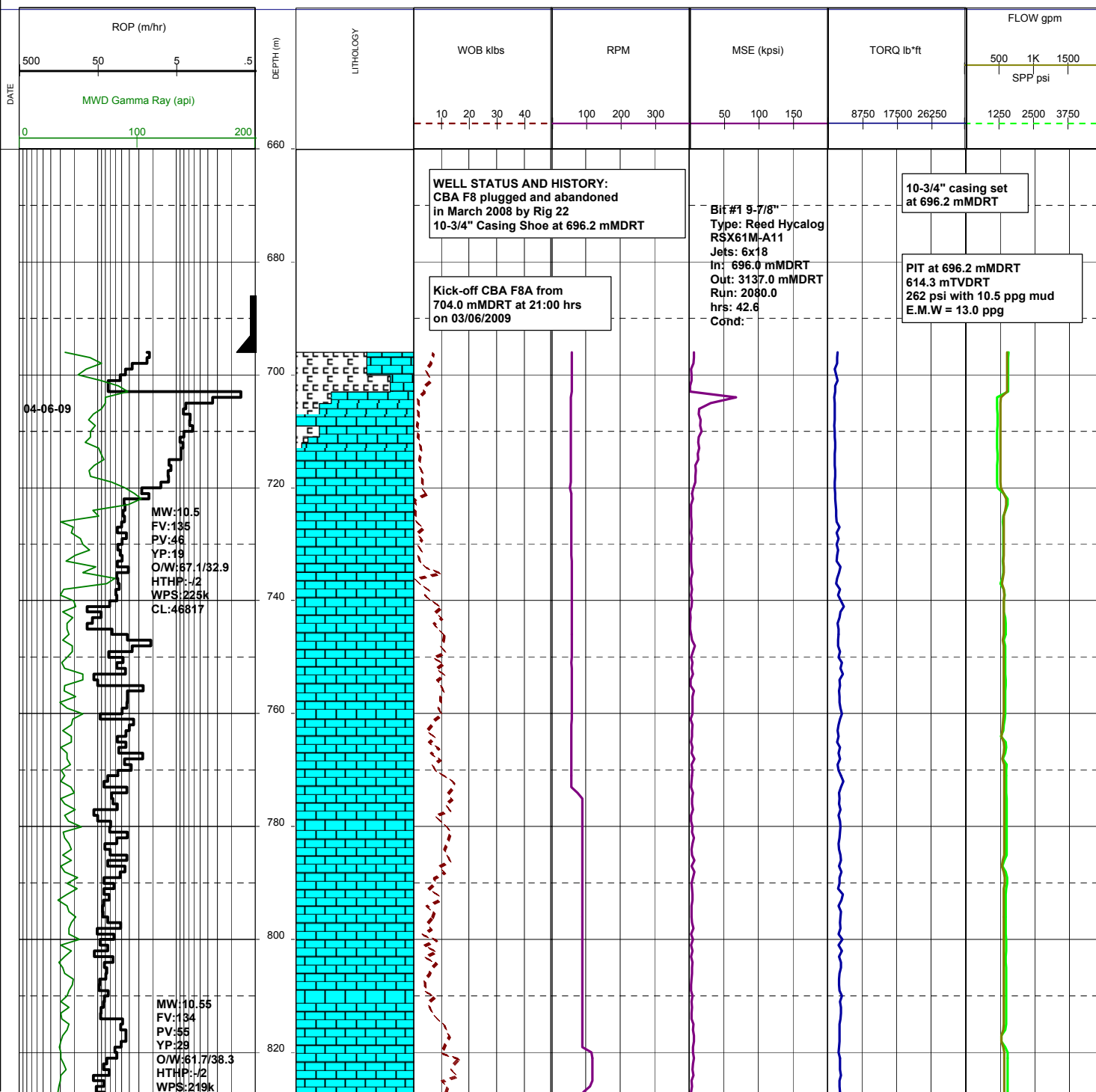
Well Name : Cobia F8A
Company : ESSO AUSTRALIA LTD

Country : AUSTRALIA

RT-MSL (m) : 41.0
RT-SEABED (m) : 120.0

Final TD:
Final TVD:

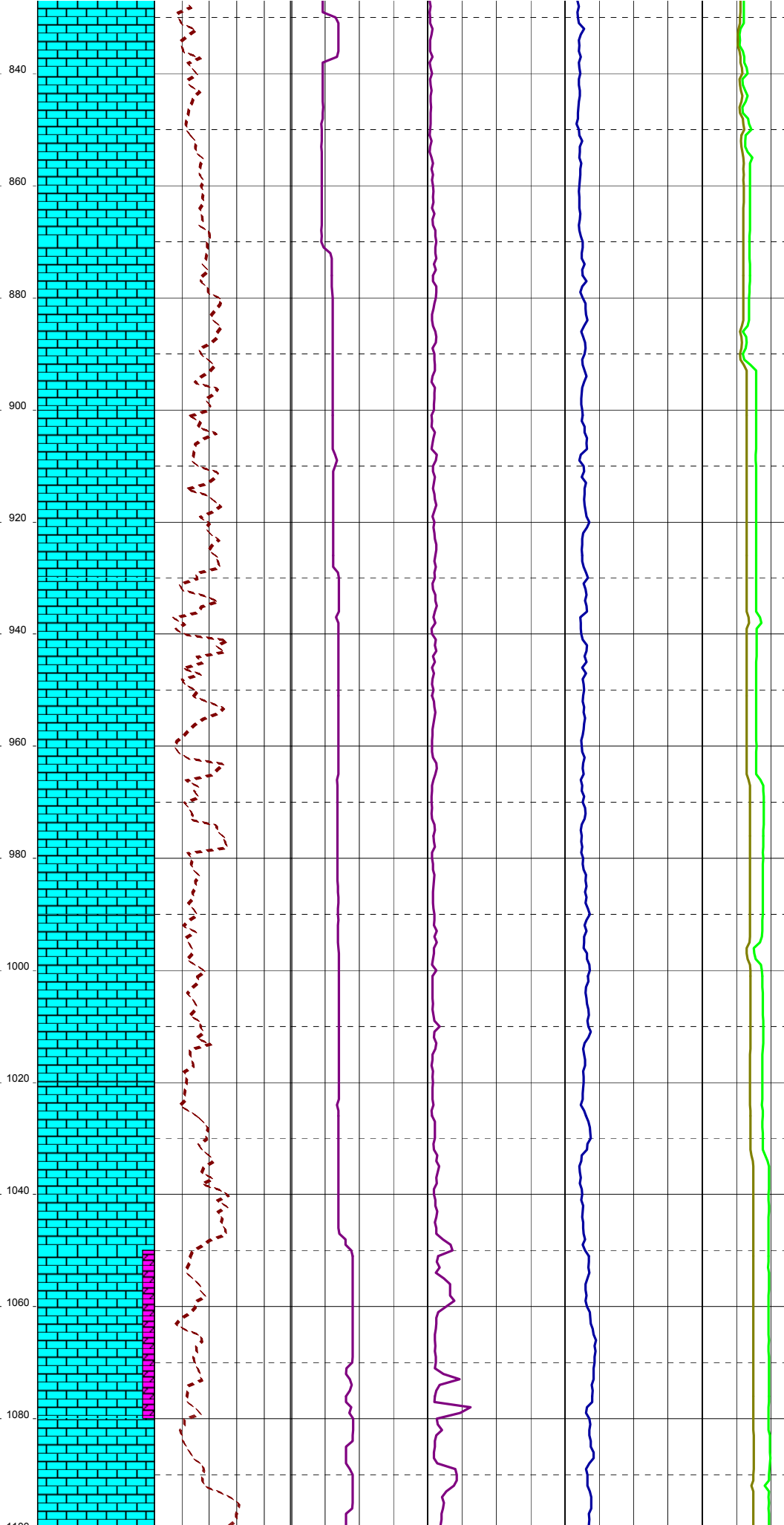
Generated by geoNEXT Package



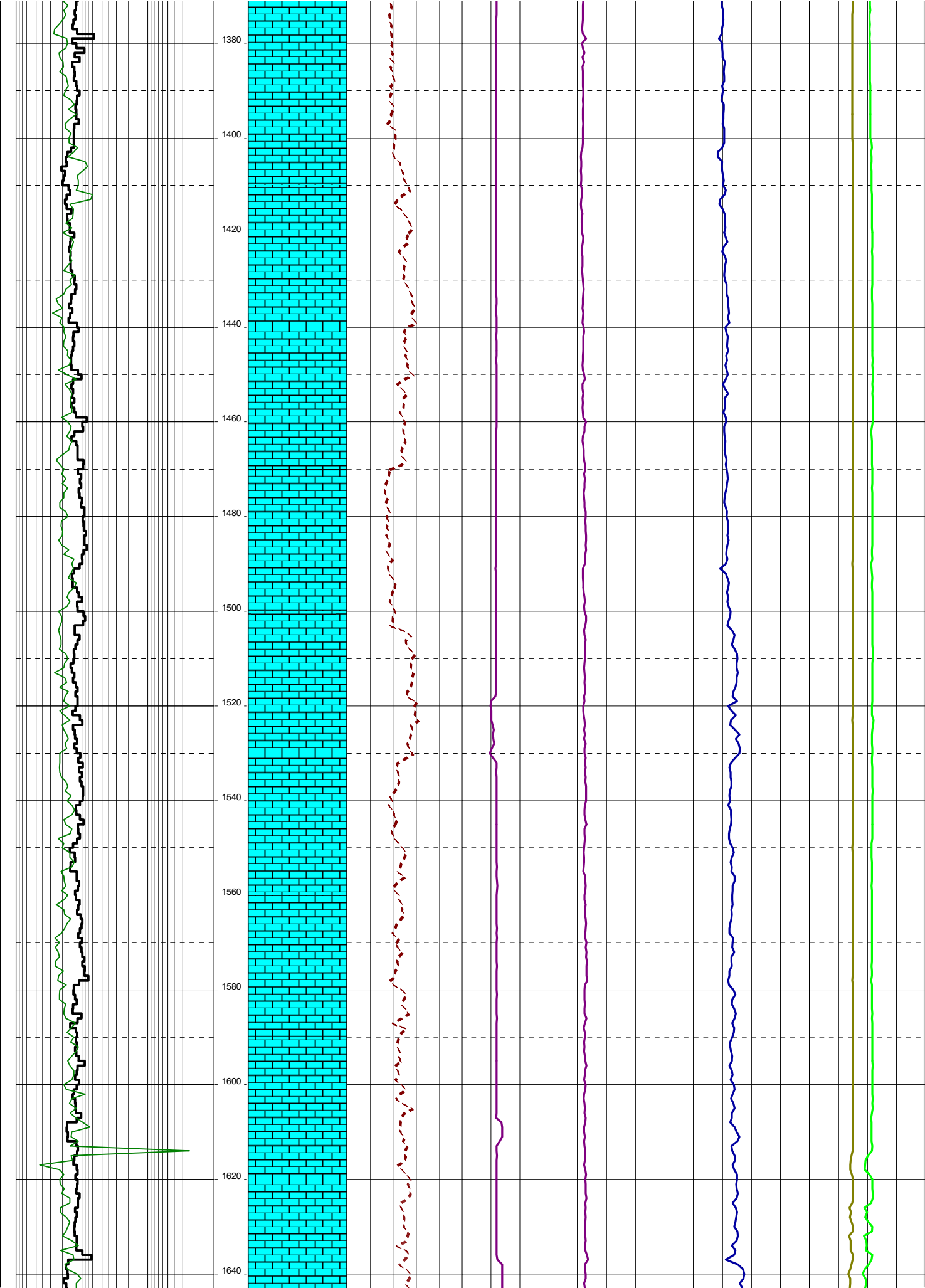
CL: 51868

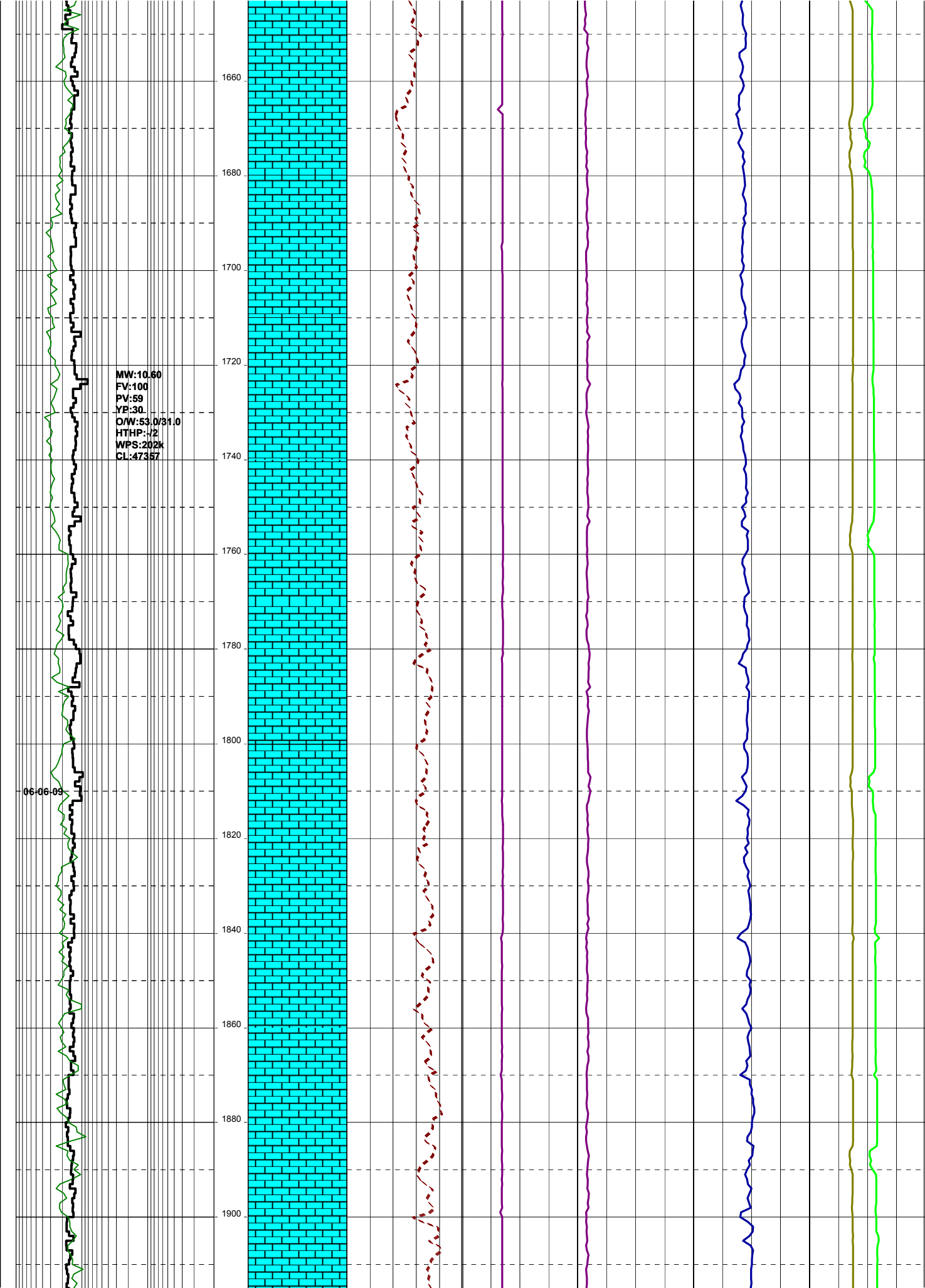
MW: 10.60
FV: 123
PV: 64
YP: 29
O/W: 62.2/37.8
HTHP: 1/2
WPS: 220k
CL: 52092

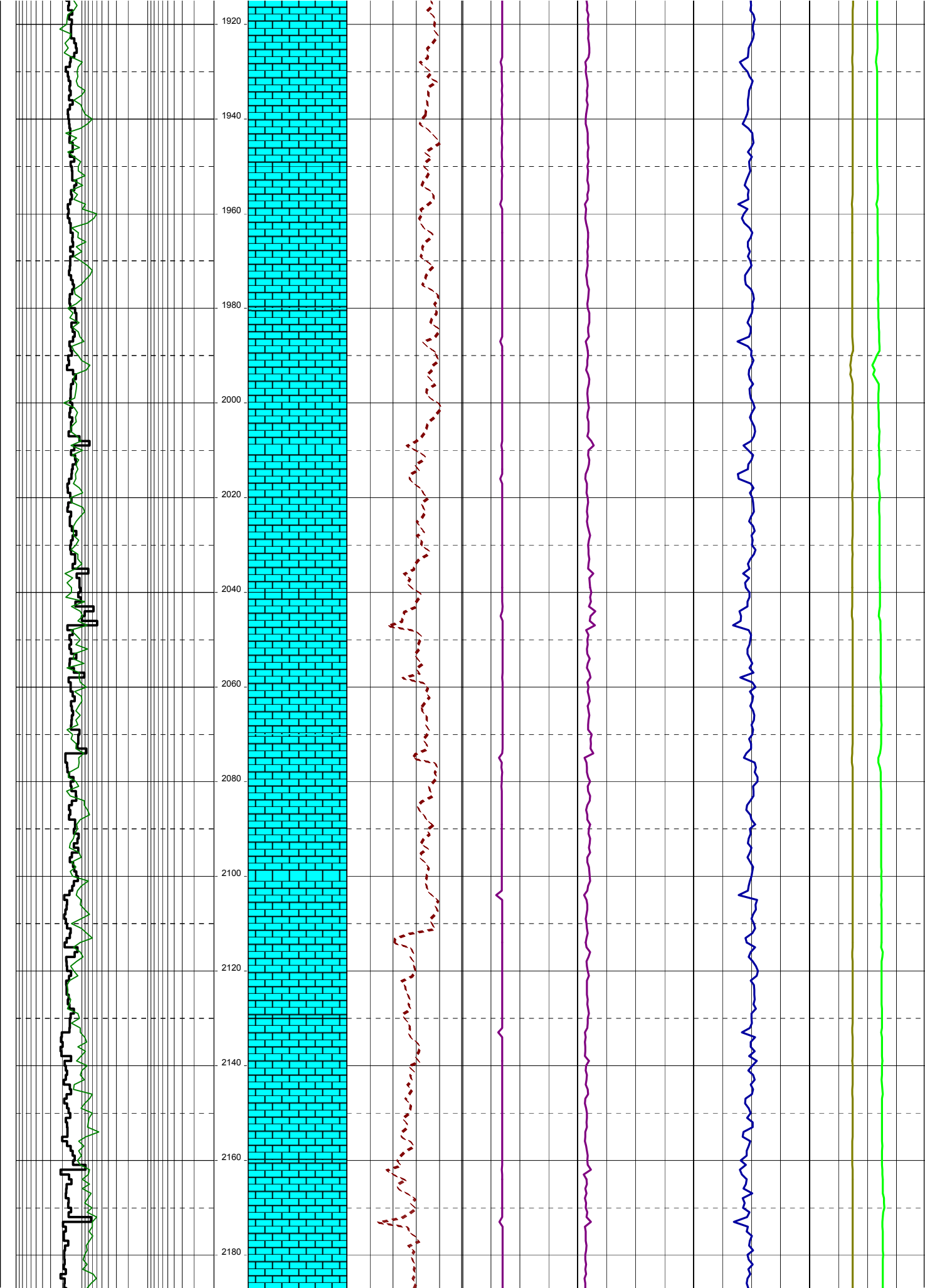
05-06-09

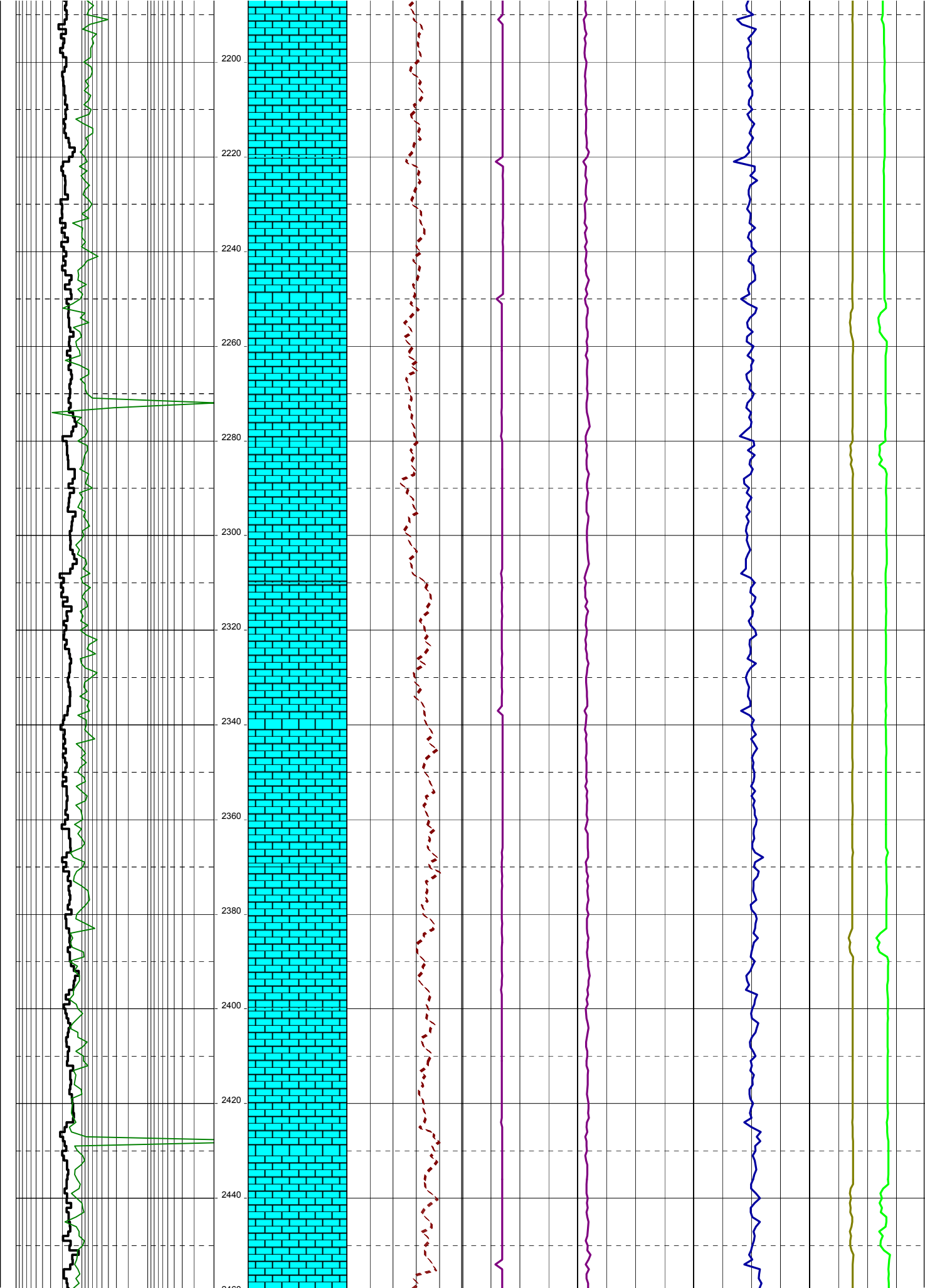


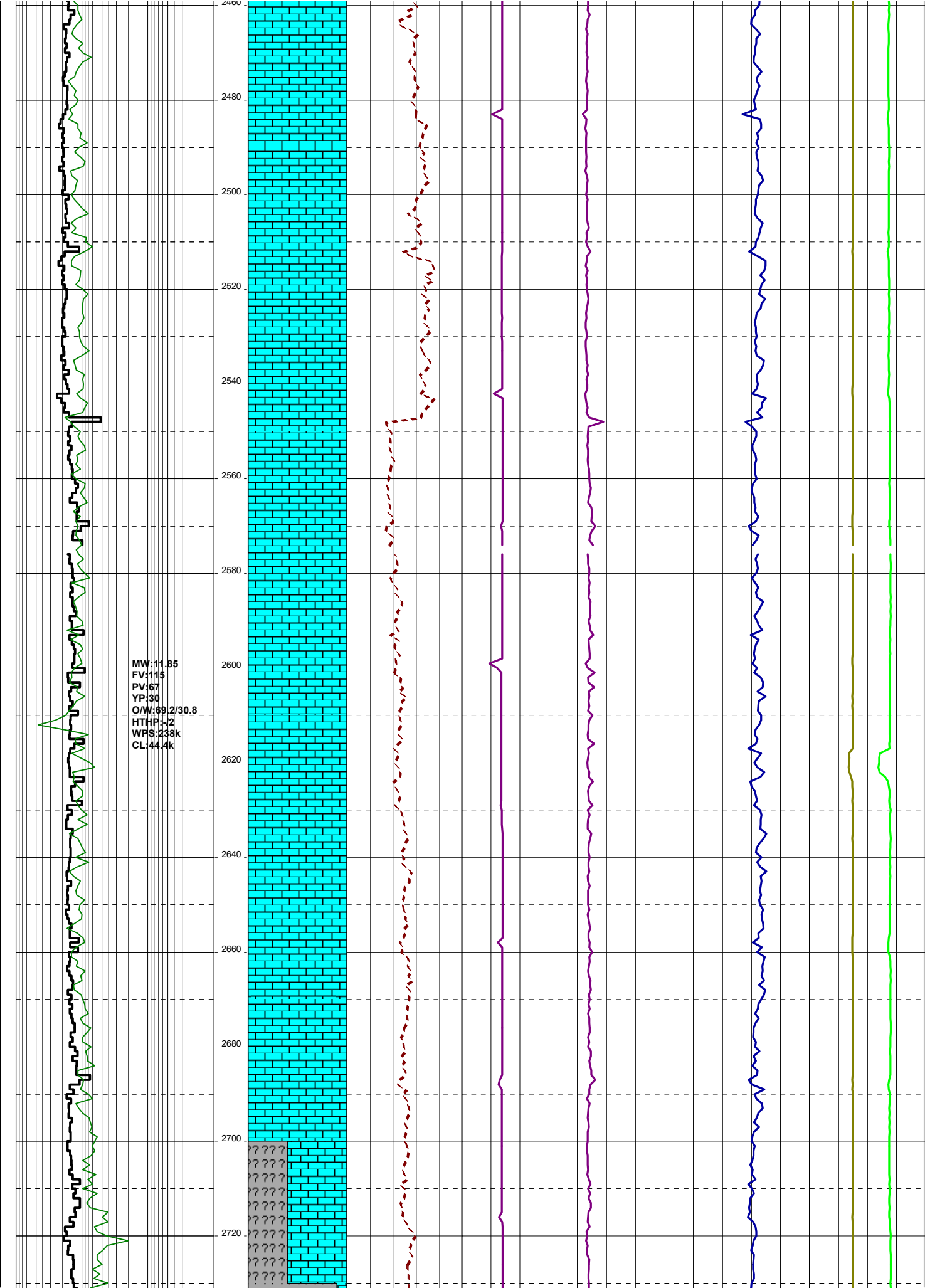






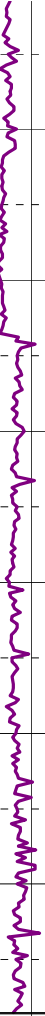
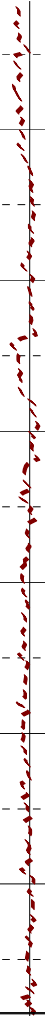
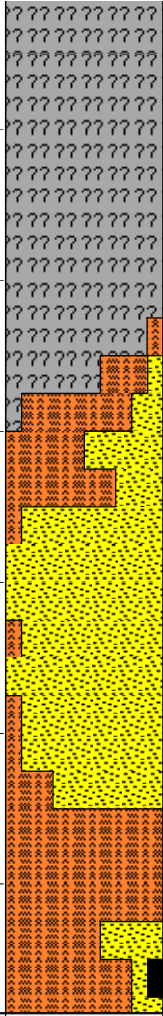






MW:11.65
FV:98
PV:65
YP:26
O/W:71.2/28
HTHP:-/2
WPS:239k
CL:44.9k

3020
3040
3060
3080
3100
3120
3140
3160



Cobia F8A reached TD of
3137.00mMDRT (2468.95mTVDR)
(-2427.95mTVDSS) at 11:15 hrs
on 07/06/2009